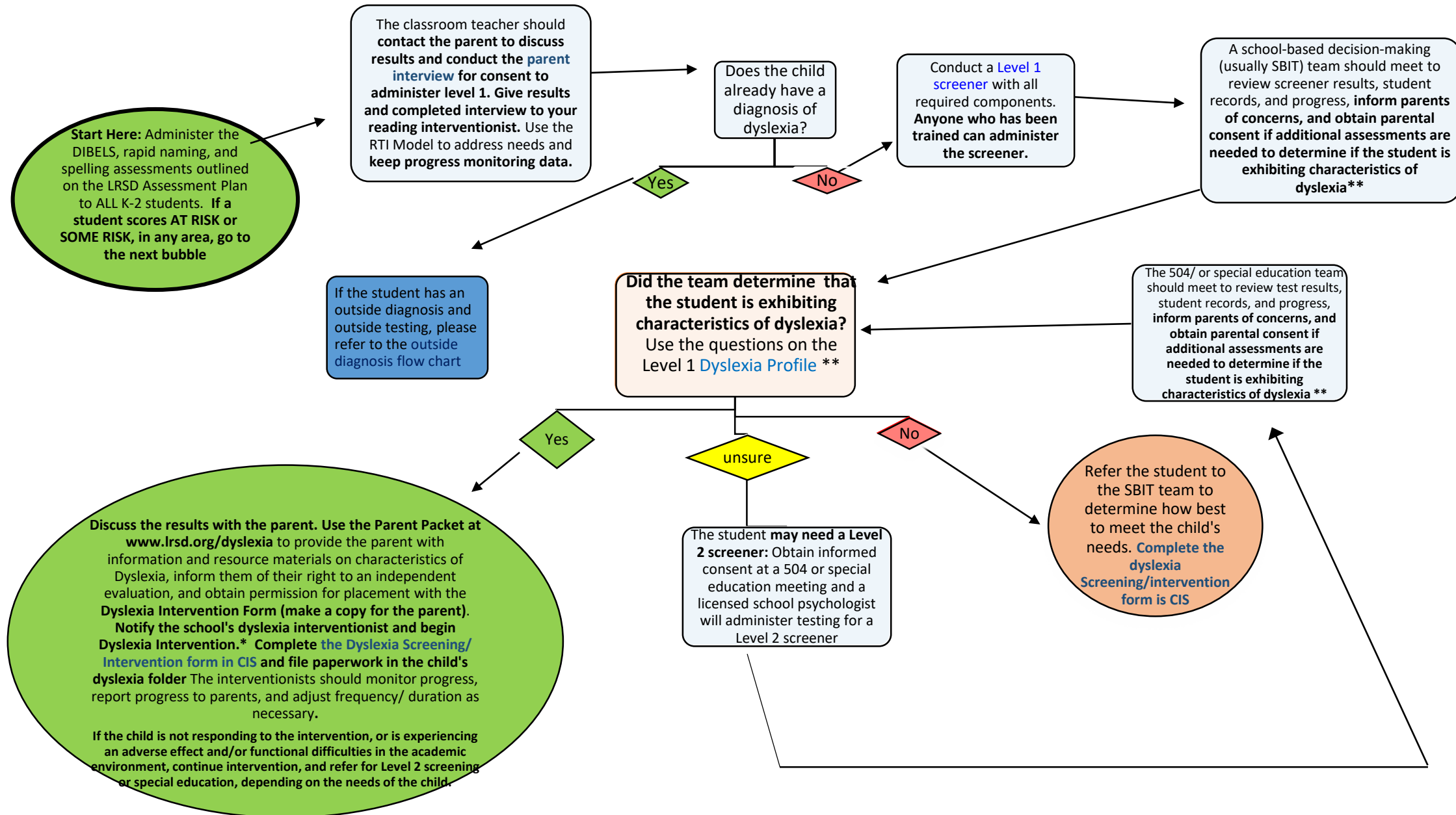


LRSD Dyslexia Screener Process for Students in K-2 without an outside diagnosis.



*In rare instances, a parent may refuse dyslexia services. In these instances, please try to determine a solution. If a solution can not be reached, Provide the parent with the [Parent packet](#), and have the parent complete and sign the Parent Letter for Dyslexia intervention. A member of the team will need to complete the dyslexia screening/intervention google form and note that parent refused services.

** Dyslexia intervention should begin as soon as possible to address the student's needs. If the team determines the student is exhibiting the characteristics of dyslexia, then the student shall be provided dyslexia intervention services (Ark. Code Ann. § 6-41-603 (c)(2)(A)).

Disclaimer: completion of this flow chart does not ensure regulatory compliance. This is chart is to provide information to guide the dyslexia screening process. All decisions should be based on individual student need and follow the requirements of the law. For more information see <http://www.arkansased.gov/divisions/learning-services/curriculum-and-instruction/dyslexia>.